

Thaden CP4 School Building

Thaden School is a new independent school based in Bentonville, Arkansas. Its 30-acre landscaped campus, contains strikingly designed education buildings.

Project:	Thaden CP4 School Building, AR
Use:	Education
Architect:	Marlon Blackwell Architects, AR
Product:	Morin Matrix Wall Panels and Morin SLR Roof Panels

Rising to the Challenge

Morin specializes in roll forming heavier gauge single skin architectural metal wall and roof systems. These systems were used extensively in a very challenging way on both the wall and roof of the Thaden CP4 school building—one part of the much larger and very unique campus.

“Designed by a team of nationally renowned architects, the campus is designed to ‘spark curiosity and inspire creativity’”, according to the school website. It was a creative and technical challenge for single skin metal, the perfect niche job for Morin.

Realizing the Vision

Metal cladding was used to cover the entire building including as part of a very complex roof design using continuous length panels formed on-site. Morin equipment and production teams oversaw site forming of the architecturally strong SLR Roof panels and the extensive detailing of the roof. Roll forming on-site

was the key to successfully implementing the design that included many angles and technical aspects.

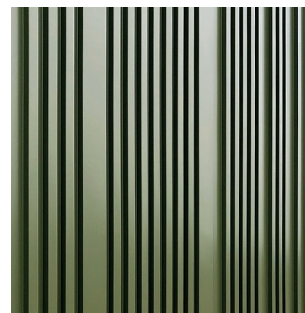
Due to the complex geometry, multiple seams and laps, there were warranty concerns. Jeff Wicker, VP from Shefers Roofing, worked extensively with the Morin technical team to design and custom-fabricate all the elements needed to ensure a watertight warranty from Morin.

Wall panels were installed by a different company, managed by a different Morin region, but all coordinated by Morin. This project used the popular dynamic look of multiple integrated panels from the Matrix Series. Matrix panels are one of three integrating ranges totalling over 25 different profiles that can be mixed and matched together in a variety of configurations. The design impact of variable panels and the shadows and dimensional depth to these panels, as well as angular cuts, play well with the ‘curiosity and creativity’ theme of the overall campus.

Custom Color

Custom color-matching to a particular need and in both the wall and roof was an important feature of the design facilitated by Morin. A high-build custom metallic paint finish was also used.

The green color emulates the paintwork of a rare ‘68 Ford Mustang. Wall and roof panels can be custom color-matched to just about anything, and the finished color can even be adjusted to accommodate slight hue variations in the substrates.



HQ / East 685 Middle Street, Bristol, CT 06010 T: 1-800-640-9501
West 10707 Commerce Way, Fontana, CA 92337 T: 1-800-700-6140
South 1975 Eidson Drive, DeLand, FL 32724 T: 1-800-640-9501

www.morincorp.com #morincorp



Morin®
A Kingspan Group Company