

Exposed BR-28-ES Profile A

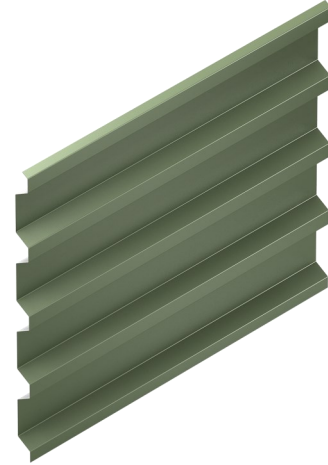
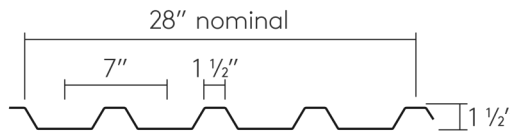
Primary Application: Roof

Height 1.5" / 38.1mm

Width 28" / 711mm

Options Perforation Options for Aluminum, Stainless, Zinc and Copper

Produced at: Bristol CT, Deland FL



Suggested Metals

Galvalume 24, 22, 20, 18 Ga

Aluminum .032, .040, .050

Zinc .8mm, 1mm

Copper 16, 20 oz.

Stainless Steel 24, 22, 20 Ga

Testing Information

ASTM 1592 for Galvalume and Aluminum

ASTM 283/331 (Valid for solid panels) For Galvalume and Aluminum

FM Approval Testing can be performed to Job Spec.

Florida Product Approval 20 ga. only

Span charts for untested gauges/materials are calculated using section properties. Untested/ Perforated Panels sold in this material require side stitching/exposed fasteners



Morin HQ / East 685 Middle Street | Bristol | CT 06010

Morin West 10707 Commerce Way | Fontana | CA 92337

Morin South 1975 Eidson Drive | DeLand | FL 32724

T: (860) 584-0900 F: (860) 582-7503 Toll Free: 1-800-640-9501

T: (909) 428-3747 F: (909) 428-6433 Toll Free: 1-800-700-6140

T: (860) 584-0900 F: (860) 582-7503 Toll Free: 1-800-640-9501

www.morincorp.com

#morincorp